

ST. CLAIR COUNTY HEALTH DEPARTMENT

# STORMWATER

## WET WEATHER TMDL SAMPLING PLAN

St. Clair County Road Commission

2025



# STORMWATER



KEEP IT CLEAN

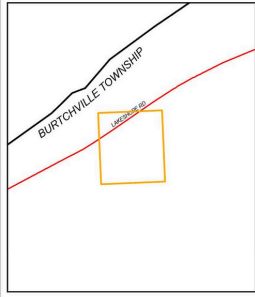
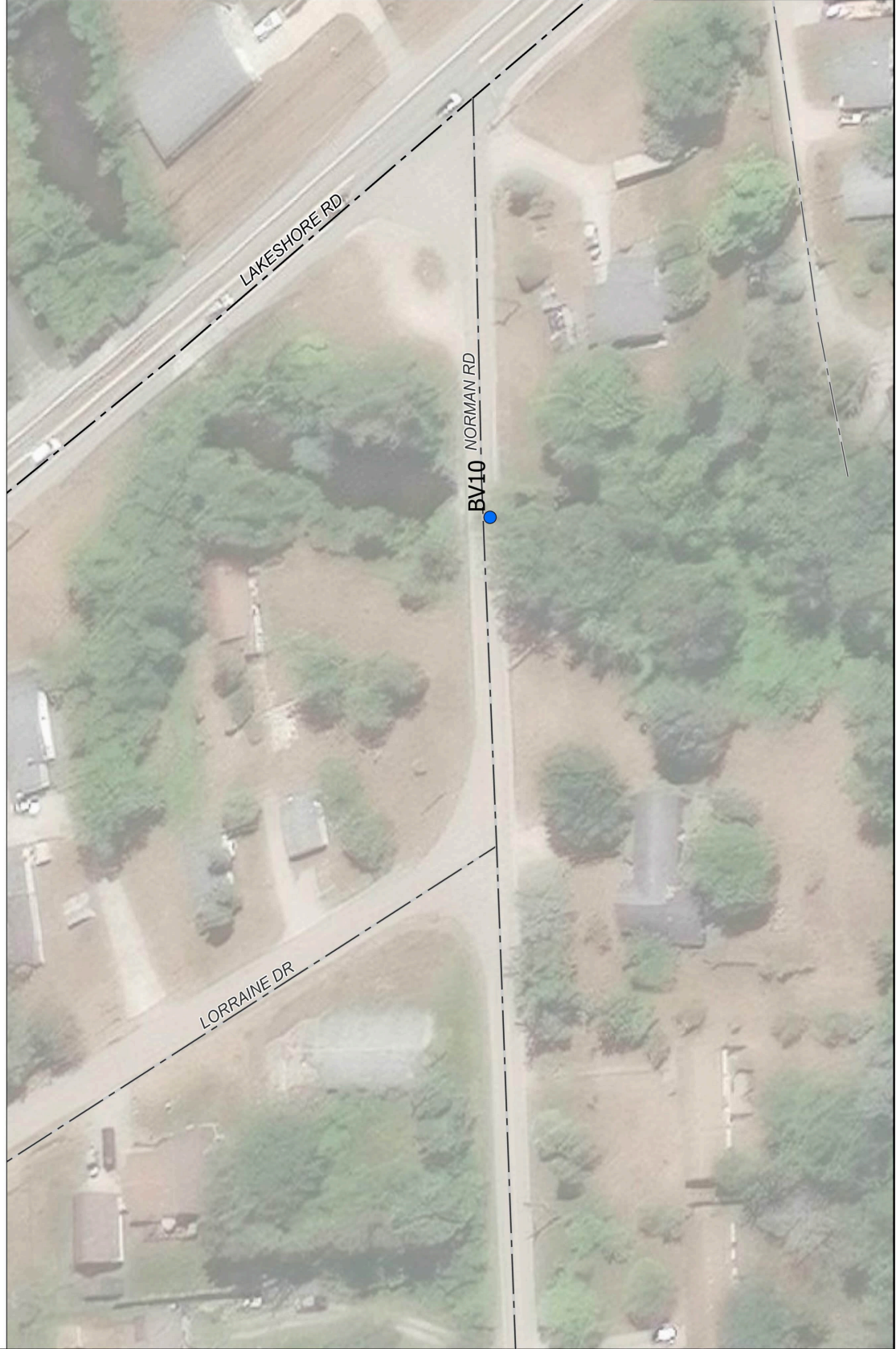
## St. Clair County Road Comission

<b>Outfall/POD ID</b>	<b>Latitude</b>	<b>Longitude</b>	<b>Receiving Water</b>
BV10	43.097597	-82.484501	Lake Huron
PH01	42.999913	-82.484403	Black River
KM02	42.990015	-82.537833	Black River
PH06	42.982503	-82.488417	Black River
PH07	42.981563	-82.496138	Black River
PH04	42.980265	-82.481953	Black River

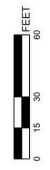
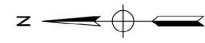


# TOTAL MAXIMUM DAILY LOAD SCREENING

## ST. CLAIR COUNTY, MICHIGAN



AREA MAP  
NOT TO SCALE



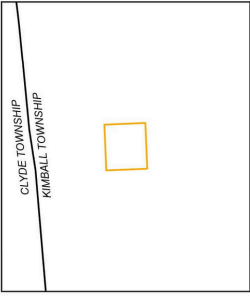
- LEGEND**
- STATE ROADS
  - COUNTY ROADS
  - LOCAL ROADS
  - SCC TMDL COUNTY GROUP 1

BY	MARK	REVISIONS	DATE
<small>THE WORK REPRESENTED BY THIS DRAWING WAS PREPARED BY THE ENGINEER FOR THE PROJECT AND IS NOT TO BE USED FOR ANY OTHER PROJECT, LOCATION, CONDITION, OR PURPOSE. THE USER SHALL BE RESPONSIBLE FOR OBTAINING ALL NECESSARY PERMITS AND APPROVALS FROM THE APPROPRIATE AGENCIES AND AUTHORITIES.</small>			
SAINT CLAIR COUNTY, MICHIGAN			
<b>TOTAL MAXIMUM DAILY LOAD SCREENING</b>			
DE BY: SMG	CH BY: KRS	PROJECT NO.	
DR BY: SMG	APP BY: KRS	120960SG2013	
STDS	SHEET	OF	DR
DATE: FEBRUARY 2025	FILE NO.		
SCALE: 1"=30'	DRAWING		

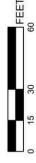


# TOTAL MAXIMUM DAILY LOAD SCREENING

## ST. CLAIR COUNTY, MICHIGAN



AREA MAP  
NOT TO SCALE



**LEGEND**

- STATE ROADS
- COUNTY ROADS
- LOCAL ROADS
- SCC TMDL COUNTY GROUP 1



BY	MARK	REVISIONS	DATE

THE WORK REPRESENTED BY THIS DRAWING WAS DEVELOPED BY THE ENGINEER OR OTHER PROFESSIONAL PERSONNEL UNDER THE CLOSE PERSONAL SUPERVISION AND CONTROL OF THE ENGINEER. THE ENGINEER HAS REVIEWED THE WORK AND HAS FOUND IT TO BE IN ACCORDANCE WITH THE CONDITIONS AND QUALITY AS STATED IN THE PERMIT AND STATE OF MICHIGAN. THE ENGINEER DOES NOT WARRANT THE ACCURACY OF THE INFORMATION AND WILL NOT BE LIABLE FOR ANY OTHER LOCATION, CONDITION, OR DESIGN INFORMATION.

SAINT CLAIR COUNTY, MICHIGAN

TOTAL MAXIMUM  
DAILY LOAD SCREENING



SPICER GROUP  
230 S. Washington Ave  
Birmingham, AL 35207  
www.SpicerGroup.com

DESIGNER: SMS  
DRAWN BY: SMS  
CHECKED BY: MRS  
PROJECT NO: 12096SG2013

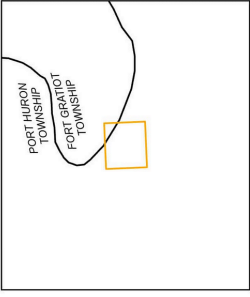
STATUS: FEBRUARY 2025  
SCALE: 1"=30'

SHEET 15 OF 15  
FILE NO. DR  
DRAWING

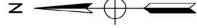


# TOTAL MAXIMUM DAILY LOAD SCREENING

## ST. CLAIR COUNTY, MICHIGAN

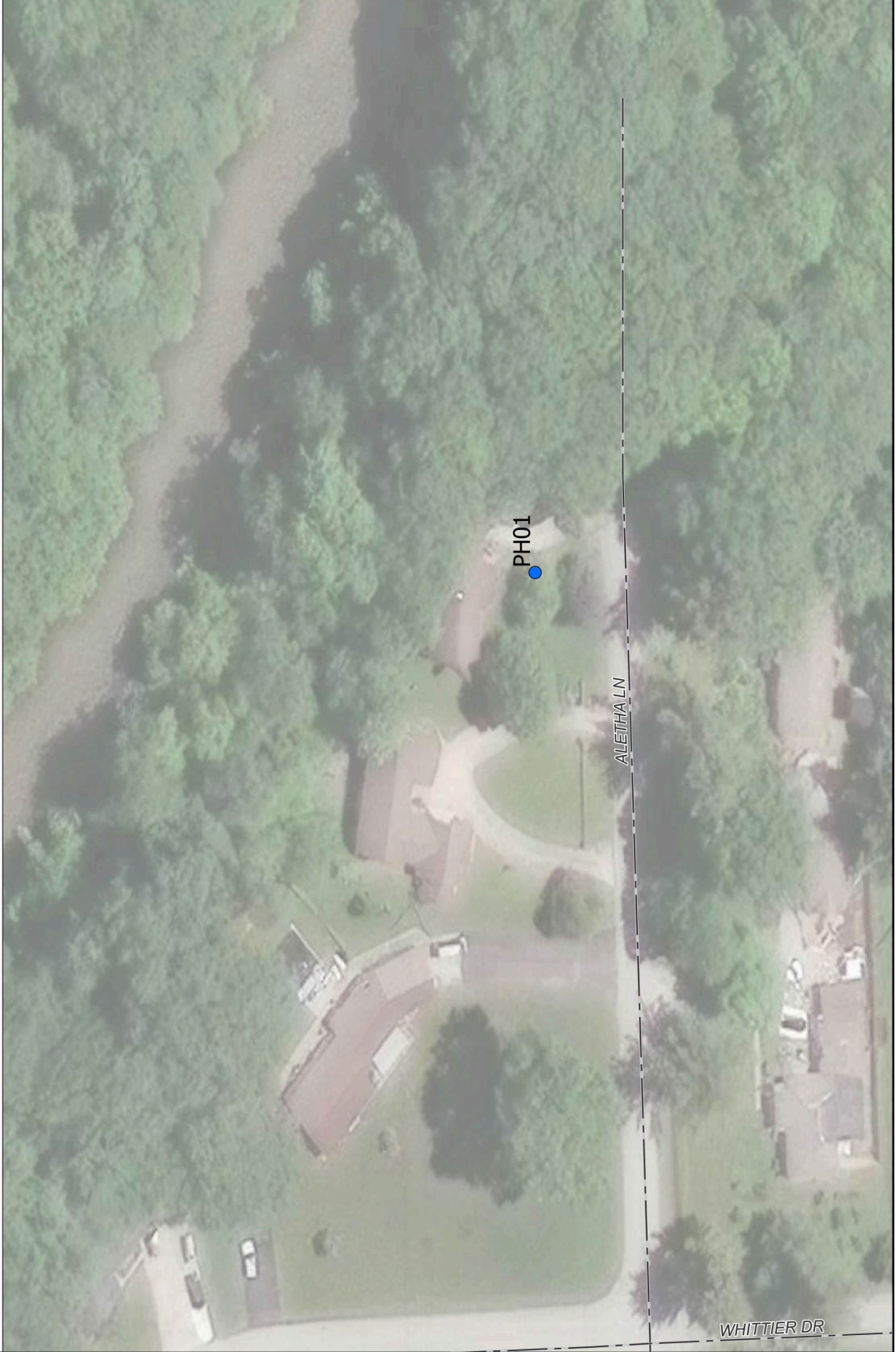


AREA MAP  
NOT TO SCALE



### LEGEND

- STATE ROADS
- COUNTY ROADS
- LOCAL ROADS
- SCC TMDL COUNTY GROUP 1



BY	MARK	REVISIONS	DATE

THE WORK REPRESENTED BY THIS DRAWING WAS PREPARED BY THE ENGINEER FOR THE CLIENT AND IS NOT TO BE USED FOR ANY OTHER PROJECT OR PURPOSE. THE ENGINEER ASSUMES NO LIABILITY FOR THE ACCURACY OF THE INFORMATION PROVIDED IN THIS DRAWING OR FOR THE CONSEQUENCES OF ANY ACTION TAKEN OR NOT TAKEN IN RELIANCE ON THIS DRAWING. THE CLIENT SHALL BE RESPONSIBLE FOR OBTAINING ALL NECESSARY PERMITS AND APPROVALS FROM THE APPROPRIATE AGENCIES.

SAINT CLAIR COUNTY, MICHIGAN

TOTAL MAXIMUM  
DAILY LOAD SCREENING



SPITZER GROUP  
220 S. Washington Ave  
St. Clair, MI 48077  
Tel: 810.754.4747  
www.spitzergroup.com

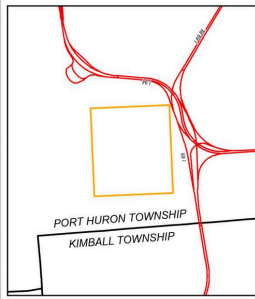
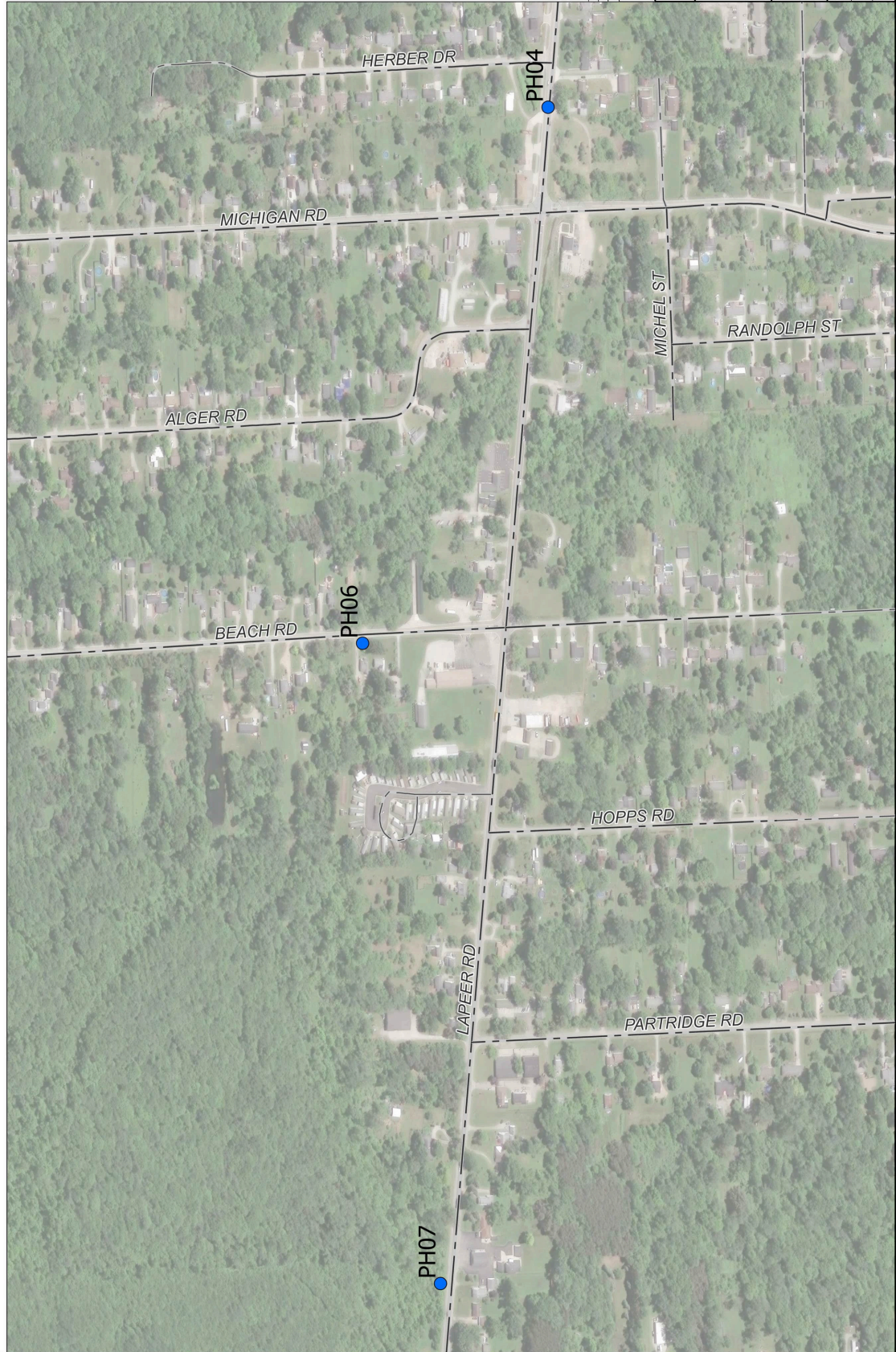
DE BY: SMG    CH BY: KRS    PROJECT NO. 120960SG2013  
DR BY: SMG    APP BY: KRS

STDS:    SHEET OF 15    FILE NO. DR  
DATE: FEBRUARY 2025    DRAWING  
SCALE: 1"=30'



# TOTAL MAXIMUM DAILY LOAD SCREENING

## ST. CLAIR COUNTY, MICHIGAN



### LEGEND

- STATE ROADS
- COUNTY ROADS
- LOCAL ROADS
- SCC TMDC COUNTY GROUP I

BY	MARK	REVISIONS	DATE
<small>THE WORK REPRESENTED BY THIS DRAWING WAS DESIGNED BY THE ENGINEER OR OTHER PERSONS REPRESENTED BY THE ENGINEER OR OTHER PERSONS AND WAS DONE IN ACCORDANCE WITH THE CONDITIONS AND SPECIFICATIONS SET FORTH IN THE CONTRACT AND SHALL NOT BE USED FOR ANY OTHER LOCATION OR CONDITION, IN WHOLE OR IN PART, WITHOUT THE WRITTEN CONSENT OF THE ENGINEER OR OTHER PERSONS REPRESENTED BY THE ENGINEER.</small>			
SAINT CLAIR COUNTY, MICHIGAN			
<b>TOTAL MAXIMUM DAILY LOAD SCREENING</b>			
<b>SPICER Group</b>			
<small>SPICER GROUP 230 S. Washington Ave Troy, MI 48067 www.SpicerGroup.com</small>			
DESIGN BY: S.M.G.	APP. BY: M.R.S.	PROJECT NO: 12096SG2013	DR
DRAWN BY: S.M.G.	APP. BY: M.R.S.		OF 15
STATUS: FEBRUARY 2025			FILE NO.
SCALE: 1"=200'			DRAWING